

# SalivaScreen<sup>®</sup>

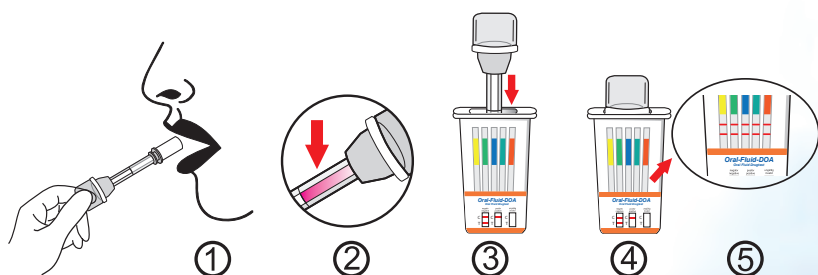
## Oral-Fluid-DOA Oral Fluid Drugtest

### NEW FEATURE!

This saliva indicator\*\* turns red, if the collection sponge is sufficiently saturated with saliva, to perform a test.

No more spoiled tests due to insufficient sample material!

\*\*patent pending

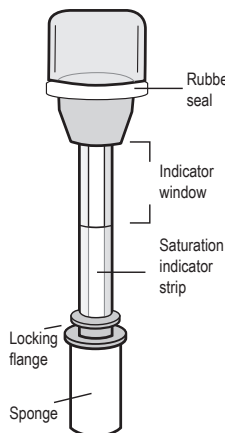


Possible Drugparameters and Cut-Offs		
AMP 50 ng/ml	EDDP 20 ng/ml	OXY 40 ng/ml
BUP 5 ng/ml	MET 50 ng/ml	PCP 10 ng/ml
BZD 10 ng/ml	MTD 30 ng/ml	THC 50* ng/ml
COC 20 ng/ml	OPI 40 ng/ml	THC 12 ng/ml

\* THC Parent -  $\Delta$ -9-tetrahydrocannabinol  
Also available with Alcohol Teststrip at: ALC 0.04 %



GECKO Pharma proudly presents the new **SalivaScreen<sup>®</sup>** drugtesting device „**Oral-Fluid-DOA**“. This new saliva drugtest device comes with the following new features.



- **Saliva indicator**
- **Lock feature** - the swab locks into the device for 100% tamper proof, airtight seal
- **Extraction ports for lab confirmation** (see figure A/B)
- **Market leading drug cutoffs** - No buffer required
- **Detect up to 10 drugs + Alcohol**
- **One drug per strip** - superior accuracy and sensitivity
- **Crystal-clear container with magnification of result windows**
- **Advance sponge material**
  - no additives
  - best recovery of THC
  - optimized for faster running tests

**GECKO<sup>®</sup>**  
PHARMA

GECKO Pharma GmbH • Reeshoop 1 • 22926 Ahrensburg • GERMANY

www.geckopharma.de • info@geckopharma.de



GECKO Pharma on Facebook